

## SKIPSEA VILLAGE HALL FORTHCOMING EVENTS

### Classes, etc.

Tuesdays from September

4:30-5:45pm – Children's Drama Group

6:15 – 7:30pm – Trim & Tone

7:45 – 9:00pm – Yoga

### Wednesdays

7:30 – 9:00pm – Bingo (now with Jackpot on last game)

### Thursdays

2:00 – 4:00pm – Over 50's (fortnightly)

Camera Club – there is a possibility of starting a weekly camera club – for more info ring Mike Bean 07709 965821

Self Defence Club – for adults and children. Possibly to start in September but in-between time there will be a demonstration for anyone to come along and get more information. Watch out for posters, etc., giving details.

Quiz Nights – start again fortnightly on Thursday, 28<sup>th</sup> September at The Board Inn, Skipsea, 8pm. You don't need a team. Just come along for a non-serious fun night.

Car Treasure Hunt – on Friday 25<sup>th</sup> August. First car leaving at 6:45pm onwards from Skipsea Village Hall – cost £4.50 per person including supper. (£3 for children)

For more info on the above, ring Julie on 469714

Check Village News in the Bridlington Free Press or posters in the village for more information.

Have you a story to tell? Do you want to mention someone's birthday or anniversary? Are you having an event that needs advertising? Then let us know. Ring Steve on 469521 or e-mail peterhawkins@btinternet.com

# Your Mirror on Skipsea look into it

Edition 1—August 2006



## SKIPSEA GALA

Skipsea Gala – the village event of the year. All was going well until Friday night. All the volunteers and members of the Events Committee were at the school putting up the gazebos, marking out the arena and sorting out where the Beer Tent was going (very important). The long wait for the scouts to bring their marquee, but where were the Majorettes? They were supposed to be staying overnight in the field. 8pm .... And still no sign. The Special Coffees lady had telephoned the school earlier to say she could not come, the Events secretary had a message to say the mini traction engine was having trouble starting and would be unlikely to come. This was getting worse and still no sign of the Majorettes. The Events secretary rang their co-ordinator – “Oh, they are not coming. They have a problem with their transport. Have you not been told?”

No one had informed the Committee, so that was three attractions down. What would be next?

Saturday morning. Bright and early up to the school, putting out the handi-craft boards, sorting out the tombola, setting up the PA system. The morning is flying by. People start arriving but where is the Steel Band, the children's rides, the ATC with their drums to join in the parade?

1 o'clock, 1:15, 1:30, hurray! Here comes the Steel Band. Well, a drum, at least. Here are the trampolines and a slide ..... What a slide! It was spread out on the grass. Masses and masses of polythene and plastic. Then it started to rise and rise. It was enormous and then suddenly there were two of them, taking up an huge space, and then the frontage was added. What a fantastic slide!

The band were setting up their drums but still no ATC. Perhaps they had gone straight to The Board for the parade. Ten minutes to two and the parade should be on its way but a message arrives at the PA tent. "Parade delayed. The Princesses' driver has locked her keys in the boot" but, never mind. Hornsea police to the rescue.

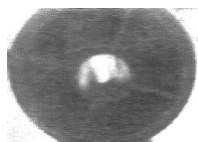
Mid-afternoon and the Gala is well under way, missing the dog show, but hopefully everyone enjoying the Kendo, the Steel Band, the school dancing, the pantomime horses and the tombolas. Late afternoon, and the prizes are given out for the handicraft competitions and Sophie Wilson, once again, the proud owner of the trophy for overall winner in the children's section.

Five o'clock and everyone drifts off home, leaving the volunteers the task of clearing everything away. Out come the poles, down come the tents. Another successful Gala over for another year. So, a big "thank you" to you all from the secretary of the Skipsea Events Committee for all the help and support you have given them. See you next year.

#### New Village Hall Course

First Response Course (free course). Tuesdays nights 7pm at the Village Hall (details from Bob MacKenzie Tel 468435)

WHAT'S THIS A  
PICTURE OF?



Answer next issue

### Skipsea Open Gardens

The Open Garden Day was a great success. Over ninety people took the opportunity to view 13 pretty village gardens. A big thank you to all the participants and a special thank you to the owners of the gardens. Steve & Julie.

Youngsters of Skipsea have your say. Tell the Mirror your story. Send in your ideas on what you can do for the community and what they can do for you. Call the Mirror hot-line 469521

Calling all Model-Makers.

There will be a workshop in the Village Hall on Friday, 11<sup>th</sup> August, 12 noon to build an up-to-date scale model of Skipsea Village. All youngsters welcome. If you are under six – bring your Mum or Dad.

The Skipsea Parish Plan Steering Group began its consultation process at the Skipsea Gala on 8<sup>th</sup> July, where residents and visitors alike were asked what they thought were the good and bad things about Skipsea. Some of the following comments were recorded:

**Good:** "A fantastic place to live, nothing bad to report – a very satisfied, happy new resident," "the Wildlife Centre," "ice-cream!"

**Bad:** "Too much traffic," "Traffic needs slowing down – especially outside the school," "We need a mini roundabout at the MainSt/Beeford Rd/ Brid Road/Back St. junction," "A footpath to Skipsea Sands and easy beach access is needed."

If you missed out on the opportunity to have YOUR say, then don't worry. Over the next few months there will be more consultations and possibly a questionnaire so you can express your hopes for Skipsea in the future. Please take this opportunity to let the Steering Group know what YOU want to see happen.

### WHAT IS A PARISH PLAN?

If you haven't heard about Parish Plans or are not sure what one is, then here is a quick summary.

A Parish Plan is a vision for how the community wants to develop, and identify the action needed to achieve it. The Plan can include everything that is relevant to the people who live and work in the community, from employment and playgrounds to the design of new buildings and protection of hedges and ponds. It can include any social, environmental or economic issues. **It is up to you, the community, to decide what is important to you.**

If you want to know more about Skipsea Parish Plan – or want to offer help – you can contact Wendy Brennan, Chairman. 01262 468762.

### MILL LANE CLOSURE

The stretch along the seafront from Skipsea Sands to Ulrome will soon have to be closed to traffic. What will it mean to you? Let the Mirror know your feelings. Call Steve on 469521